

Ka Hana Kapa



Kapa attire worn by halau dancers in their April 2011 Hilo concert performance. Photos courtesy of Halau O Kekuhi and The Edith K. Kanaka'ole Foundation

Kapa lovers and Hawaiian cultural practitioners are converging on Maui this month. The kapa and other exhibit items have landed at the Maui Arts & Cultural Center's Schaefer International Gallery. The gallery staff are hard at work. Halau O Kekuhi has been rehearsing on the Big Island. Publicity, including the coconut wireless, is letting friends, family and everyone who is interested in this special project, know that all are welcome to attend the 2014 activities on Maui

opening on Saturday January 18 and Sunday January 19.

The performance of Hi'iakaikano'eau is a major highlight of this weekend of events having to do with kapa, and marks the opening of the exhibition featuring contemporary kapa artists of Hawai'i: Mohala Hou Ke Kapa (Kapa Blossoms Anew). Following the weekend, the exhibit is open from January 21 through March 9. There is no admission charge to visit the Schaefer International Gallery.

JANUARY FREE EVENTS AT HISAM

The public is invited to these free events for January 2014 to be held at the Hawai'i State Art Museum in the No.1 Capitol District Building at 250 South Hotel Street in downtown Honolulu. See feature stories and photos of these events in this eNewsletter. Not subscribed to eNews? [Join here for monthly updates.](#)

First Friday

Shoji Ledward
Friday, January 3, 2014
6-9 p.m.

Usher in 2014 with guitarist and HISAM favorite Shoji Ledward who play an eclectic mix of jazz, pop standards and more.

Second Saturday

Creative Re-use with The Green House
Saturday, January 11, 2014
11 a.m.-3 p.m.

Get creative with collage and make this year's eco-stationary from last year's calendars in a "Creative Re-use" session.

Art Lunch

Beijing Opera in Honolulu
Tuesday, January 28, 2014
12 p.m.-1 p.m.

UHM professor Elizabeth Wichmann-Walczak and three master-artists from China share a sampling of the rigorous training for the theatrical art form Jingju (also known as Beijing or Peking opera)

Ka Hana Kapa—cont'd

Mohala Hou Ke Kapa exhibit

Tuesday January 21 through Sunday March 9, 2014
10:00 am – 5:00 pm
MACC's Schaefer International Gallery is open Tuesday through Sunday. Free to the public.

Kapa: The Makers' Journey symposium

Sunday, January 19, 2014
1:00 – 3:00 pm.
Panelists Nalani Kanaka'ole, Kekuhi Keali'ikanaka'oleohailani, Marie McDonald, Roen Hufford and Lisa Shattenburg-Raymond will discuss the history and Hawaiian values of kapa along with the botanical aspects of plants and natural dyes, the function, diversity and future of the customs and practice. There will be demonstrations by Solomon Apio (tool making), Dalani Tanahy (traditional technique) and Denby Freeland (contemporary presentation) and Kaliko & Jon Spenser 'Eha Pictures (video documentation). \$10 admission.

For more information about these events, hours, and ticket information – see the Maui Arts & Cultural Center website at www.mauiarts.org

Observe and Play Family Day

Saturday February 8 and Saturday March 1, 2014
10:00 am – 12:00 pm
Parents and children are invited to Schaefer International Gallery to see the exhibit, watch kapa demonstrations, and make a small piece of art to take home. Free to the public.

Hi'iakaikano'eau hula performance

Saturday January 18, 2014
7:30 pm

[MACC's Castle Theatre](#)

An original full-length hula work from Halau O Kekuhi that reincarnates the wisdom of Hawaiian kupuna through the poetry of movement and the Hawaiian functional aesthetic through the poetry of fiber. Halau O Kekuhi will be wearing traditional costuming made of kapa, designed and made by each kapa practitioner especially for this performance. Tickets for the Hi'iakaikano'eau performance are \$40, \$30, and \$12 plus fees.



Kapa attire worn by halau dancers in their April 2011 Hilo concert performance. Photos courtesy of Halau O Kekuhi and The Edith K. Kanaka'ole Foundation

First Friday at the Hawai'i State Art Museum

Friday, January 3, 2014 6 – 9 p.m., Hawai'i State Art Museum, Free

Guitarist Shoji Ledward ushers in the New Year with the First Friday of 2014 at the Hawai'i State Art Museum on January 3rd. Shoji will perform American standards, show tunes and jazz from the 1930s to present day.

A lifelong musician, Shoji began playing guitar at age seven. Since then, he has played with the biggest names of the Hawai'i music scene such as Don Ho, Melveen Leed, and Kapono Beamer, just to name a few.

Ruth Freedman's angelic harp music charmed all the visitors who came to see the December opening of our latest exhibit The Gertrude Mary Joan Damon Haig Collection He Makana of Hawaiian Art, Paintings, and Prints.



Shoji Ledward



Ruth Freedman

Our Ohana – In Memoriam

Millicent M.Y.H. Kim passed away at her home in Ashland, Oregon on August 23, 2013 at the age of 75. She was an ardent advocate for Hawai'i's arts community: twice appointed to the Commission of the Hawai'i State Foundation on Culture and the Arts and eight years its chair, FY 1989-1994. Signature events during her tenure included the staging of Hawai'i's presence at the American Folklife Festival at the Smithsonian Institution in Washington, D. C. (1989); a restaging of the Folklife Festival on Magic Island the following year; the exhibition of the Art in Public Places Collection at The Contemporary Museum (1990) to celebrate the silver anniversary of the SFCA, and the publication of the agency's only volume of oral history featuring interviews with Masaru "Pundy" Yokouchi, the agency's first chair and Alfred Preis, the agency's first director. As chair, Kim was instrumental in the passing of Act 389 and the evolution of the Art in State Buildings Law into the Works of Art Special Fund. This act enabled the agency's Special Fund to function more productively in the architectural planning for State buildings as well as more expeditiously with the State's fiscal process.

A Hawai'i Island resident, Kim was active in the Democratic Party

and headed the House of Representatives Research Office for the Hawaii State Legislature. She later became the Director of Research and Development for Big Island Mayor Lorraine Inouye. She also served as the principal consultant on government affairs for a prominent Honolulu law firm. Enthusiastic, energetic, and persuasive, Kim often attended legislative hearings



to advocate for the SFCA, especially to defend the one percent for art law. She was a longtime friend of the Art in Public Places Program and the SFCA's Biennium Grants Program, which awards State and Federal funds for community arts programming.

SFCA executive director now retired Ron Yamakawa was saddened with Kim's passing. "She loved the arts and was always pro-

active, caring and astute in her perceptions about people and issues. She never grew tired of listening, making connections and sharing her mana'o. She was always willing to help."

Kim was again appointed to the SFCA Commission from 2001-2006 by Governor Cayetano. It was at a particularly low point in the global recession. During that period, she was instrumental in participating in the restructuring of the Biennium Grants Program to keep funds flowing to sustain arts programs, especially on the neighbor islands. She and fellow board member George Ellis were integral to reviewing every inch of grants policy and procedure with a staff working committee. Their decisions are still the backbone of the grants program today.

While Kim was at Mountain Meadows arts community, she remained active in governance, serving on the community board and working on committees that looked after everything from parking to arts and entertainment to delivering frozen mice for wildlife exhibit raptors. She loved watercolor painting and delighted in meeting people and talking story.

"She did so much for us; for Hawai'i," said Yamakawa.

Kim is survived by son Sam, brother Myron and sister Melvia Kawashima.

Join the Friends of HiSAM

We invite you to join the Friends of the Hawai'i State Art Museum (HiSAM). By simply joining, you can help maintain a free, public institution dedicated to the art and people of Hawai'i. You can join by phone by calling 536-2644, or you can download an application form by clicking on [Friends of HiSAM Application Form](#).

Community News:

Taiko Center of the Pacific Celebrates Twenty Years

Many of us have seen taiko artist Kenny Endo perform, in concert or in the community. An integral part of both the international and Hawai'i taiko scene for over two decades, Kenny is a prolific composer, collaborator, and performer who can be seen on stages large and small throughout the islands. Deeply respected in the worldwide taiko community, he has an active schedule performing, teaching, and collaborating across the country and around the globe. But Hawai'i is his home and it is here where he continues to create new voices for an ancient instrument and to inspire taiko students.

What many people may not know is that Kenny and his wife Chizuko have established and maintained one of the largest and most successful taiko schools outside of Japan. Located right here in Hawai'i, the school is celebrating its 20th anniversary this year.



Kenny (L) and Chizuko (R) at a 2012 SCEP library presentation. Photo courtesy SCEP.

A School of Traditional and Contemporary Japanese Drumming

Taiko Center of the Pacific (TCP) was founded by the Endos in 1994, with Kenny Endo serving as Artistic Director and Chizuko Endo as Managing Director. Through TCP they are able to preserve traditional Japanese drumming and create new music for taiko. Classes in taiko drumming to the general public take place year round for all ages and all skill levels. Since its inception, thousands of children and adults have studied kumidaiko (ensemble drumming) at TCP. Students learn basic form and technique, practice pieces in TCP's

repertory, and learn cultural customs associated with the art form. Current class offerings include: Taiko Tots (ages 2-4), Family Taiko (young child plus parent), Youth, Teens, and Adults. In 2014, TCP classes will be held at Washington Middle School and at Kapi'olani Community College.



Noah Sakai, age 2 (L) and Jason Asano, age 3 (R) practice drumming in Taiko Tots class. Photo courtesy Cindy Ellen Russell.



Family Taiko class. Photo courtesy TCP.

The TCP school is central to the Endos' commitment to cultural enrichment in the local community. This is most evident in the quality of the TCP Youth Group, also founded in 1994, which is a performing ensemble of local youth ranging from elementary through high school. The Youth Group recently had an O'ahu weekend camp which emphasized group bonding, teamwork, and leadership, in preparation for their performance at the Maui Arts & Cultural Center. The Endos, for whom a taiko school like theirs didn't exist when they were growing up, have created an incubator in Hawai'i for the next generation of taiko artists and community leaders.



TCP's Youth Group. Photo courtesy TCP.

Intensives and Advanced Study

In addition to the public classes, TCP periodically offers special workshops on different styles of taiko or related arts, as well as Summer Taiko Intensive week-long courses focusing on different aspects of taiko. These are led by Kenny and leading guest instructors.



The TCP "Contemporary and Classical Japanese Drumming" project in August 2013 brought guest artists from Japan (including Kenny's hogaku teacher) for a concert performance, public presentations (this one at Palolo Hongwanji) and master classes. Photo courtesy TCP.

Since 2003, Taiko Center of the Pacific has offered opportunities for serious taiko students to study at TCP tuition-free for one year. Kenny Endo's reputation has attracted talent from across the continental U.S. and from as far away as Argentina and Hong Kong. Bringing talent and a dedication to the art, these TCP Fellows contribute a great deal to the dynamism of the school.

Many Hawai'i institutions recognize taiko as a vital aspect of local Japanese culture and community. Kenny Endo has received multiple HSFCA Appren-

Taiko Center of the Pacific Celebrates Twenty Years—cont'd

ticeship Grants over the years through the Folk and Traditional Arts Program, enabling him to teach some of his most dedicated and advanced students with greater frequency and intensity, imparting a deeper understanding of the musical traditions which inform his creative work. Passing this knowledge on to the next generation of artists and cultural practitioners is a responsibility that Kenny feels keenly as a tradition bearer.

Community Outreach

Adding to their service of sharing taiko with the Hawai'i community, the Endos offer educational outreach programs about taiko. Over the span of two decades, they have held performance-demonstrations for tens of thousands of audience members at schools, libraries, community centers, correctional facilities, and senior centers throughout the state. Many of these programs were supported by the Statewide Cultural Extension Program (SCEP) at the University of Hawai'i Outreach College. In addition to community performances, taiko arts residencies in the schools allow sustained learning over several weeks. These residencies teach students the fundamentals of taiko drumming and provide an accessible and enjoyable way to explore music, movement, art and cultural identity. When conducting one of these residencies on Lana'i, students, residents of the island and visitors are also treated to a free public performance co-sponsored by The Lodge at Ko'e'le.



Kenny teaching a Lana'i student (2010). Photo courtesy SCEP.



Free performance at The Lodge at Ko'e'le (2010). Photo courtesy SCEP.

Taiko Arts Center – Supporting Taiko Education and Artistry

Taiko Arts Center (TAC) was established in 2005 as a federally-recognized 501(c)(3) nonprofit. The Center is rooted in Kenny Endo's vision that tradition is the basis of innovation, and that taiko bridges cultures and promotes peace. Here and abroad, TAC supports taiko classes, scholarships, educational and outreach programs, and development of new works.

Supported by development grants from the Mayor's Office of Culture and the Arts and its own fundraising, TAC

has supported collaborations between taiko and the following genres: jazz music, with local musicians Noel Okimoto (drums, percussion) and Dean Taba (bass); bharatanatyam, a percussive style of Indian classical dance; sabar, a drum tradition from Senegal in West Africa; contemporary dance, with the University of Hawai'i at Manoa dance faculty and students; and Hawaiian slack key guitar. Most recently, TAC supported a concert and educational outreach for "Classical and Contemporary Japanese Drumming," featuring musicians from Tokyo versed in shamisen and percussion from nagauta, the classical kabuki theatre musical tradition. True to its mission of promoting taiko in the Hawai'i community, TAC has rededicated itself to the support of a physical dojo space for Taiko Center of the Pacific, to ensure the school's lasting presence.



"Yamamba", performed with the University of Hawai'i Dance students, February 2013. Dance choreographed by Betsy Fisher. Photo courtesy TCP.

Kenny Endo is best known as a professional taiko artist, and a leader in the innovation of the art form, using his foundation in the Japanese musical traditions to collaborate and compose in unique ways. However, he and Chizuko Endo have also made a huge impact teaching and promoting taiko through the school they created. Taiko Center of the Pacific, now in its 20th year, continues to nurture and develop taiko, and by extension Japanese art and culture, within the local Hawai'i community. For more information about classes, performances and other activities, see [their website](#).

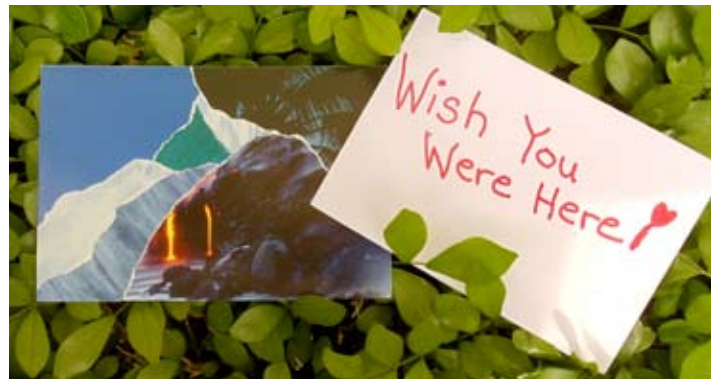


Photo by Shuzo Uemoto.

Second Saturday

Creative Re-use with The Green House

Saturday, January 11, 2014, 11 a.m.-3 p.m., Hawai'i State Art Museum, Free



The Hawai'i State Art Museum presents Second Saturday with the sustainability gurus at The Green House. Join us in "Creative Re-use" as we fashion a new and practical purpose for those out-dated calendars we all have from previous years. Learn how to cut, fold, and collage to make your own personal, statement-making eco-stationary!

Gallery hours for the museum are 10 am to 4 pm. The hands-on art activities are free and open to the public from

11am to 3 pm while supplies last.

Downtown streets aren't crowded on the weekend, so walk, bike, take The Bus or drive to HiSAM on Second Saturday (\$3 flat-rate parking across the street at Ali'i Place; enter at 1099 Alakea St. Free parking available at City & County underground lot at Beretania and Alapai.)

Come see—it's your art!

HSFCA Begins 2014 with Director Search

The HSFCA Commission accepted the resignation of Eva Laird Smith effective January 1, 2014 after two years of service as executive director. The search for a new executive director will be underway later this month and a public notice will be issued.

Art Lunch Lecture

Chinese Theatre at UH Manoa—Beijing Opera

Tuesday, January 28, 2014, Noon -1 p.m., Hawai'i State Art Museum, Free

Enjoy a taste of professional Jingju training at January's Art Lunch with Chinese music professor Elizabeth Wichmann-Walczak and three master artists from China. Every four years, the University of Hawai'i at Manoa Department of



Yang Yuhuan in *The Favorite Concubine Becomes Intoxicated* (Guifei Zui Jiu)

Theatre and Dance features one of the leading national theatre forms of China, Jingju (Beijing/Peking "opera"). Under the overall artistic direction of Madam Shen Xiaomei, the personal disciple of the legendary Chinese actor Mei Lanfang, leading professional artist-teachers from China train UH students to perform a well-known Jingju play, which is translated and directed by faculty member Elizabeth Wichmann-Walczak. This year, Mr. Lu Genzhang is training male roles,

Ms. Zhang Ling female roles, and Mr. Zhang Xigui instrumental roles for the February and March presentation of *Lady Mu* and the Yang Family Gener-



Madam Shen Xiaomei in the same role in *The Favorite Concubine Becomes Intoxicated*

als (Mu Guiying Gua Shuai). In this presentation, Wichmann-Walczak will describe the overall training program, and the three master artist-teachers will then give participants a taste of the actual basic training experience.

Elizabeth Wichmann-Walczak is Professor in the University of Hawai'i at Manoa Department of Theatre and

Dance, and Director of the Asian Theatre Program. She is the performance student of Madam Shen Xiaomei, the personal disciple of the legendary Chinese actor Mei Lanfang, and became the first non-Chinese to perform Jingju (Beijing/Peking "opera") in the Peo-



Shen and Wichmann-Walczak at Shen's honorary doctorate at UHM several years ago.

ple's Republic of China while carrying out research for her doctoral dissertation. Her awards in China include the National Xiqu Music Association Kong Sanchuan Award and the National Festival of Jingju Golden Chrysanthemum Award for outstanding achievements in promoting and developing Jingju.

Art Lunch is held in HiSAM's Multipurpose Room on the first floor of the historic No. 1 Capitol District Building located at 250 South Hotel Street.

Volunteer Opportunities at the HSFCA

Interested in helping the Hawai'i State Foundation on Culture and the Arts with projects that benefit the Art in Public Places Collection? Become a volunteer! Opportunities are available in the Art in Public Places Program. Learn about Collections, assist with exhibit installations at the Hawai'i State Art Museum, support the Acquisition Award Selection Committee process, or go behind the scenes of current and upcoming public art projects. If you're an art or art history student, volunteering at the HSFCA would be a great addition to your resume. To apply, download the [volunteer application form](#), call 586-9959, or email hisamvolunteers@gmail.com.

A STEAM Opportunity: "The Inventive Engineer" Poster Contest!

Science, Technology, Engineering, Art and Math are separate disciplines collectively known as STEAM. The "process of thinking" demanded in engineering is built on creative blending of the skills defined by STEAM. This year there is an easy way to introduce middle and high school students to a STEAM-based lesson satisfying Common Core State Standards.

As part of a celebration of [National Engineers Week](#) in mid-February, the [Hawai'i Council of Engineering Societies](#) is inviting middle and high school students to use a full range of STEAM skills to create and submit a poster by February 7, 2014. The poster will be judged on effective use of well-defined engineering terms and standard units of measure in an appealing creative format. The poster should communicate the student's own or an existing invention, mechanism, or engineered design.

The contest is open to public, private, and home schooled students across the state. It is designed to be uncomplicated to enter. Students are encouraged to use internet and software tools and grow ideas for their poster in free communication with other students and with teachers and parents. Application instructions, rules,

and helpful tutorial information are at www.hawaiiyberspace.com/Engineer-Week. Teachers, parents, and students may also address specific questions, and announce their intention to participate, in an email to mentor@alum.mit.edu.

Posters (sized up to 12" x 18") will be on public display at Pearlridge Shopping Center. Cash and prizes will be

Congresswoman Suzanne Bonamici (D-OR) and Congressman Aaron Schock (R-IL) urged the inclusion of the Arts as well. Many advocate that integrating art and design with the other technical fields of STEM will best nurture a creative future workforce. During the summer of 2013 and supported in part by Hawaii State Foundation on Culture and Arts (HSFCA), both the Hawai'i Arts Alliance and the Maui Arts & Cultural Center held summer institutes for classroom teachers that highlighted the connections between STEM and the arts labeled STEAM.

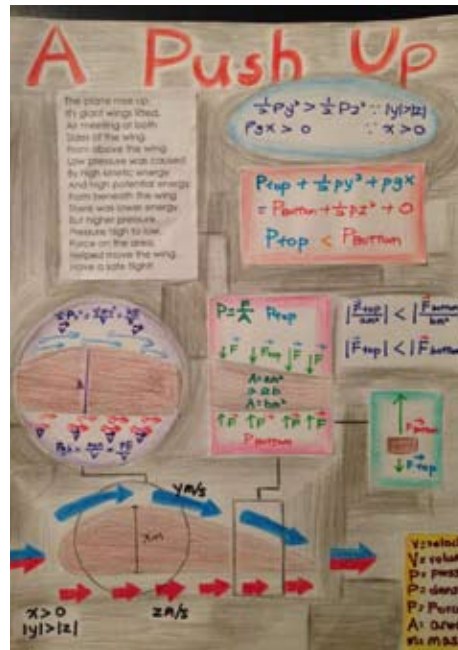
The new Common Core State Standards in English Language Arts, for example, anchor standard 5, ask students to "make strategic use of digital media and visual displays of data to express information and enhance understanding of presentations." Through the Inventive Engineer Posters, ideas will be expressed non-verbally and visually. Sketches, drafted details, labels, narrative description of parts and function, symbols, formulas, and correctly used standard units of measures will Bring Dreams to Life with an exciting rigor and artistry to generate interest and persuasive understanding.



Leonardo da Vinci's diagrams in the 15th century

awarded! "Engineering combines art and science and math and technology: be artistic!" said contest coordinator Philip Blackman. The Inventive Engineer Poster Contest is amplifying this year's Engineers Week theme: "Bringing Dreams to Life"

When Congress passed the America COMPETES Act in 2007, also known as the STEM Act, it authorized funding for science, technology, engineering and math education. In 2012,



Student presentations in the 21st century

labels, narrative description of parts and function, symbols, formulas, and correctly used standard units of measures will Bring Dreams to Life with an exciting rigor and artistry to generate interest and persuasive understanding.

Subscribe Today!

Want to share all the arts and culture information with your friends and family? Forward them this newsletter and tell them to [subscribe here](#).